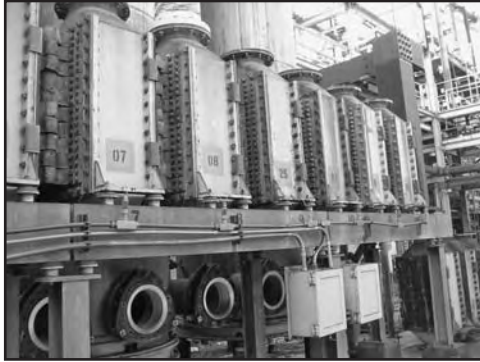


FOR SALE

COMPLETE SODIUM CHLORATE PLANT AMMONIUM PERCHLORATE EQUIPMENT TITANIUM EQUIPMENT



Immediate Availability!!



www.usedplants.com

...where your search for used plants and equipment ends!

www.usedplants.com ...where your search for used plants and equipment ends!

IAM specializes in sourcing plants and processes for the chemical, pharmaceutical, petrochemical, fertilizer, mineral processing, synthetic fibre, food processing and other process industries.

7 NORFOLK DRIVE, P.O. BOX 848
PRINCETON JUNCTION, NEW JERSEY 08550 USA
PHONE +1-609-936-8696 FAX +1-609-936-9102
SALES@USEDPLANTS.COM



COMPLETE SODIUM CHLORATE PLANT AMMONIUM PERCHLORATE EQUIPMENT TITANIUM EQUIPMENT

As a complete plant or individual equipment - 14,000 t/yr, built 1990
Krebs NC Technology, dimensionally stable anode system

(8) **Titanium Reactors** each with (3) Krebs NC 30 electrolysis cells, piping, buss bar and structural supports.
Toshiba Rectifier - 460 V, 3 phase, 60 Hz with 250 A DC output at up to 80 volts, 10,000KVA, type FCTDWR, 13,899V AC winding, 85.5 DC winding, connecting buss bar, 20,000kg. Thyristoformer – Polarization Rectifier
Titanium Crystallizer – Single effect draft tube baffle type by Swenson, with **Titanium** condenser, **Titanium** heat exchanger, Nash vacuum pumps, **Titanium** pumps.

Titanium Tank – 10,000 gallon (40m³), **Titanium Gr. 2**, vertical, 12 ft x 13 ft, (3.6m x 4m)

Titanium Pusher Centrifuge – 350mm (13.5 inch) Baker Perkins, single stage, Type Ter Meer, 1500 rpm

Titanium Scrubbing systems with **Titanium column** 32 inch x 18ft, (0.8m x 5.5m), Titanium hx's and pumps

Titanium Scrubber – 24 inch x 8 ft, (0.6m x 2.5m) by Cosmos, Koch packing, year 2000

Titanium Heat Exchanger, 30 ft² (3m²), plate and frame by Tranter, 100psi @ 200F, model UX-296-HP-75

Fluid Bed Dryer – 6 ft² (0.5m²) by Sulzer, complete system, Type FTF 60/500, **316L Stainless Steel**, 1994

Brine Filter – 150 ft² (15m²), pressure leaf type, US Filter, **Titanium** Leaves, M # 44VJ-36-150F DCD

Rotary Vacuum Filter – 30 sq. ft. (3m²) Komline Sanderson, **316 Stainless Steel**, vacuum pump

Filter Press - 100ft², (9m²) recessed plates, polypro

SS Tanks - (2) 20,000 gallon tanks, (80m³) **316L Stainless Steel**, vertical, with agitator

FRP Tanks – (1) 20,000 gal, (2) 15,000 gallon, (3) 12,000 gal, (2) 6,000 gal, (1) 3000 gal.

Salt Silo – 3200 cu.ft. (100m³) 9 ft dia. x 50 ft, (3m x 15m) with salt elevator, blower and baghouse

AMMONIUM PERCHLORATE EQUIPMENT

Rotary Dryer – 7ft x 36ft, (2m x 11m) **316 Stainless Steel**, by Standard Steel

Rotary Calciner – 4ft x 40ft, (1.2m x 12m) **Hastelloy and Stainless Steel**, gas fired, Allis Chalmers

Glass lined reactor body 1000 gallon (4000 liter)– Reglassed and Unused

Filter Press 500 ft² (45m², polypro plate, 800mm, 41 plates, hydraulic closure, plate shifter

Immediate Availability!!

This is a unique opportunity to buy complete facilities at a small fraction of replacement cost

If you have a requirement that is not identified above, please advise us as we are always working on available opportunities on a worldwide basis. We specialize in sourcing plants and processes for the chemical, petrochemical, fertilizer, synthetic fiber, polymer, pharmaceutical, mineral processing, power generation and similar industries.

7 NORFOLK DRIVE, PRINCETON JUNCTION, NEW JERSEY 08550 USA

PHONE +1-609-936-8696 FAX +1-609-936-9102 EMAIL: SALES@USEDPLANTS.COM

Representation in Australia, China, Czech Republic, Egypt, England, Germany, India, Korea, The Netherlands, Mexico, Pakistan, Russia, UAE