

By order of

Honeywell

FOR SALE BY PRIVATE TREATY

PHARMACEUTICAL / FINE CHEMICAL PLANT AS "EQUIPPED WORKS"

LOCATION: FREEPORT, GRAND BAHAMA

WWW.USEDPANTS.COM ..Where your search for used plants and equipment ends!

IAM specializes in sourcing plants and processes for the chemical, pharmaceutical, petrochemical, fertilizer, mineral processing, food processing and other process industries.

INDUSTRIAL | ASSET | MANAGEMENT

7 NORFOLK DRIVE, PRINCETON JUNCTION, NJ 08550
PHONE: 1+609-936-0008 FAX: 1+609-936-9102
SALES@USEDPANTS.COM



SITE OVERVIEW

SITE DESCRIPTION

62 ACRE SITE
2 PRODUCTION PLANTS, 1 PILOT PLANT
400,000 LITER REACTOR VOLUME
cGMP, FDA-APPROVED FACILITY

PLANT DESCRIPTION

PLANT 1: MULTIPRODUCT,
130,000L REACTOR VOLUME

PLANT 2: SINGLE PRODUCT BULK
PHARMACEUTICALS FACILITY,
270,000L REACTOR VOLUME

SOLVENT RECOVERY AND WASTE TREATMENT
FACILITY



Aerial View of the Facility



Utilities, Waste Treatment, Warehouse
With Additional 40 Acre Lot



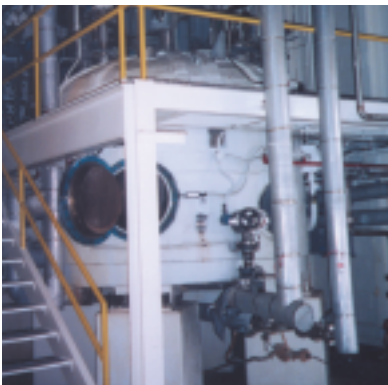
1 Of 3 Mirror Polished 7 sq.m.
316 SS "COMBER" Filter Dryer—1997



7 sq.m. 316 SS "COMBER"
Filter Dryer In Plant 2



1 Of 3 Shelf Dryers In Plant 1



316 SS "COMBER" Filter
Dryer In Plant 2



Plant 1-Multipurpose Facility



1 Of 8 48"X30" 316 SS
Basket Centrifuges

PILOT PLANT

- BUILT 1985
- MULTIPURPOSE PLANT, 3120 LITERS REACTOR VOLUME (GLASS, HASTELLOY AND STAINLESS STEEL)
- KILO LAB, CENTRIFUGE AND NUTSCHE FILTRATION, MULTIPLE DRYERS

PLANT 1

- EXPANDED IN 1990 & 1992
- MULTIPURPOSE PLANT, 130,000 LITERS REACTOR VOLUME (GLASS AND STAINLESS STEEL)
- HEAD TANKS, CENTRIFUGES, DRYERS AND MILLS

PLANT 2

- EXPANDED IN 1987, REFITTED IN 1997
- BULK PHARMACEUTICAL PLANT, 270,000 LITERS REACTOR VOLUME (GLASS AND STAINLESS STEEL)
- TANK FARM , CENTRIFUGES, NUTSCHE FILTER-DRYERS, ROTARY DRYERS

SOLVENT HANDLING & RECOVERY UNIT

- 1.1 MILLION LITERS OF TANK STORAGE CAPACITY, 316 AND 304 SS
- DCS CONTROLLED BATCH AND CONTINUOUS RECOVERY COLUMNS
- ROAD TANKER OFFLOADING FACILITIES

LABORATORIES

- EXPANDED IN 1993
- QUALITY CONTROL, PROCESS AND ANALYTICAL DEVELOPMENT, MICROBIAL AND ENVIRONMENTAL FUNCTIONS

UTILITIES

- EXPANDED CONTINUOUSLY
- VALIDATED WATER SYSTEMS, ON SITE NITROGEN GENERATION
- REFRIGERANT CAPABILITY TO -18 DEGREES C

ENVIRONMENTAL CONTROL

- EXPANDED IN 1986
- ACTIVATED SLUDGE WASTEWATER TREATMENT
- 2 STAGE ROTARY KILN INCINERATOR BUILT IN 1985 (SOLIDS AND CHLORINATED ORGANICS HANDLING CAPABILITIES)

WAREHOUSING

- 50,000 SQ.FT.TOTAL, COVERED AND FIRE PROTECTED
- 530 SQ.FT. REFRIGERATED STORAGE
- KEY AREAS SECURED, DYKED AND SEGREGATED ACCORDING TO cGMP STANDARD

A list of principal plant items together with photographs are available on our website

STRATEGIC BENEFITS

- ABILITY TO DEVELOP AND COMMERCIALIZE PROCESSES TO MANUFACTURE NEW GENERIC MOLECULES
- NO CORPORATE TAXES- FREE TRADE ZONE STATUS
- MOTHBALLED FOR QUICK RESTART
- PILOT PLANT
- cGMP, FDA-APPROVED FACILITY



.316 SS Twin Shell Blender In Plant 1



2000 Gallon 316 SS Reactor In Plant 1



A Bank Of Glass Lined Reactors In Plant 1



4000 Gallon Pfaudler Glass Lined Reactor In Plant 2

INDUSTRIAL | ASSET | MANAGEMENT

7 NORFOLK DRIVE, PRINCETON JUNCTION, NJ 08550

PHONE: 1+609-936-0008 FAX: 1+609-936-9102 EMAIL: SALES@USEDPLANTS.COM

Representation in Argentina, England, Germany, India, Israel, Korea, Mexico, Pakistan, UAE

The real estate, plant and equipment will be sold strictly "as is, where is" for operation in situ. No warranty is given, expressed or implied as to the condition of the machinery or its fitness for use. Although the information contained herein was obtained from sources deemed reliable, Industrial Asset Management LLC makes no warranty, expressed or implied as to the accuracy of the information. This sale brochure does not constitute a formal offer of sale. Details in this brochure are expressly excluded from any sale contract. All real estate, plant and equipment is subject to prior sale. All assets will be sold in accordance with the owner's conditions of sale. Further information is available on request.