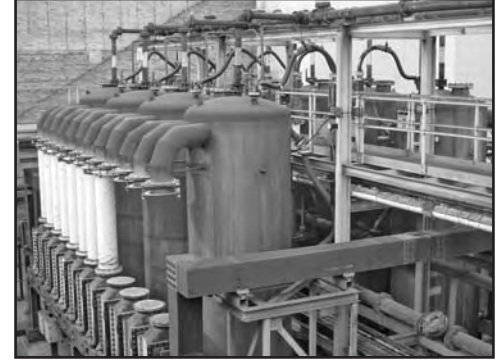
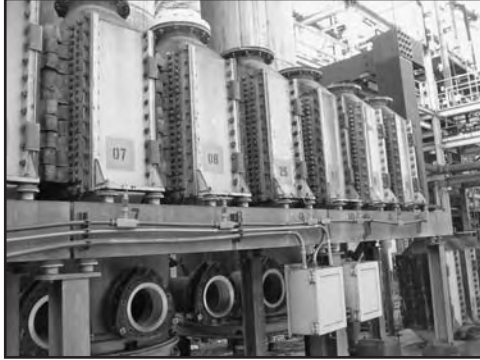


**FOR SALE**

# COMPLETE SODIUM CHLORATE PLANT AMMONIUM PERCHLORATE EQUIPMENT TITANIUM EQUIPMENT



## Immediate Availability!!



[www.usedplants.com](http://www.usedplants.com)

*...where your search for used plants and equipment ends!*

*www.usedplants.com ...where your search for used plants and equipment ends!*

IAM specializes in sourcing plants and processes for the chemical, pharmaceutical, petrochemical, fertilizer, mineral processing, synthetic fibre, food processing and other process industries.

7 NORFOLK DRIVE, P.O. BOX 848  
PRINCETON JUNCTION, NEW JERSEY 08550 USA  
PHONE +1-609-936-8696 FAX +1-609-936-9102  
SALES@USEDPLANTS.COM



# COMPLETE SODIUM CHLORATE PLANT AMMONIUM PERCHLORATE EQUIPMENT TITANIUM EQUIPMENT

As a complete plant or individual equipment - 14,000 t/yr, built 1990  
Krebs NC Technology, dimensionally stable anode system

(8) **Titanium Reactors** each with (3) Krebs NC 30 electrolysis cells, piping, buss bar and structural supports.  
**Toshiba Rectifier** - 460 V, 3 phase, 60 Hz with 250 A DC output at up to 80 volts, 10,000KVA, type FCTDWR, 13,899V AC winding, 85.5 DC winding, connecting buss bar, 20,000kg. Thyristoformer – Polarization Rectifier  
**Titanium Crystallizer** – Single effect draft tube baffle type by Swenson, with **Titanium** condenser, **Titanium** heat exchanger, Nash vacuum pumps, **Titanium** pumps.

**Titanium Tank** – 10,000 gallon (40m3), **Titanium Gr. 2**, vertical, 12 ft x 13 ft, (3.6m x 4m)

**Titanium Pusher Centrifuge** – 350mm (13.5 inch) Baker Perkins, single stage, Type Ter Meer, 1500 rpm

**Titanium Scrubbing systems** with **Titanium column** 32 inch x 18ft, (0.8m x 5.5m), Titanium hx's and pumps

**Titanium Scrubber** – 24 inch x 8 ft, (0.6m x 2.5m) by Cosmos, Koch packing, year 2000

**Titanium Heat Exchanger**, 30 ft2 (3m2), plate and frame by Tranter, 100psi @ 200F, model UX-296-HP-75

**Fluid Bed Dryer** – 6 ft2 (0.5m2) by Sulzer, complete system, Type FTF 60/500, **316L Stainless Steel**, 1994

**Brine Filter** – 150 ft2 (15m2), pressure leaf type, US Filter, **Titanium** Leaves, M # 44VJ-36-150F DCD

**Rotary Vacuum Filter** – 30 sq. ft. (3m2) Komline Sanderson, **316 Stainless Steel**, vacuum pump

**Filter Press** - 100ft2, (9m2) recessed plates, polypro

**SS Tanks** - (2) 20,000 gallon tanks, (80m3) **316L Stainless Steel**, vertical, with agitator

**FRP Tanks** – (1) 20,000 gal, (2) 15,000 gallon, (3) 12,000 gal, (2) 6,000 gal, (1) 3000 gal.

**Salt Silo** – 3200 cu.ft. (100m3) 9 ft dia. x 50 ft, (3m x 15m) with salt elevator, blower and baghouse

## AMMONIUM PERCHLORATE EQUIPMENT

**Rotary Dryer** – 7ft x 36ft, (2m x 11m) **316 Stainless Steel**, by Standard Steel

**Rotary Calciner** – 4ft x 40ft, (1.2m x 12m) **Hastelloy and Stainless Steel**, gas fired, Allis Chalmers

**Glass lined reactor body 1000 gallon (4000 liter)– Reglassed and Unused**

**Filter Press** 500 ft2 (45m2, polypro plate, 800mm, 41 plates, hydraulic closure, plate shifter

## Immediate Availability!!

**This is a unique opportunity to buy complete facilities at a small fraction of replacement cost**

If you have a requirement that is not identified above, please advise us as we are always working on available opportunities on a worldwide basis. We specialize in sourcing plants and processes for the chemical, petrochemical, fertilizer, synthetic fiber, polymer, pharmaceutical, mineral processing, power generation and similar industries.

**7 NORFOLK DRIVE, PRINCETON JUNCTION, NEW JERSEY 08550 USA**

**PHONE +1-609-936-8696 FAX +1-609-936-9102 EMAIL: SALES@USEDPLANTS.COM**

*Representation in Australia, China, Czech Republic, Egypt, England, Germany, India, Korea, The Netherlands, Mexico, Pakistan, Russia, UAE*